

2025 EUROPEAN ROWING U23 CHAMPIONSHIPS



BULLETIN

REGATTA VENUE

Technical Parameters of the Regatta Course

p.5

TEAM FACILITIES AND SERVICES

Boat storage, Changing rooms / Showers, Warm up and Cooling down

p.12

TRANSPORTATION FOR TEAMS

Airport Transportation, Shuttles Hotel - Regatta Venue

p.14

ACCOMMODATION FOR TEAMS

Online Reservation System, Official Hotels and Price List, Cancellation Policy

p.16

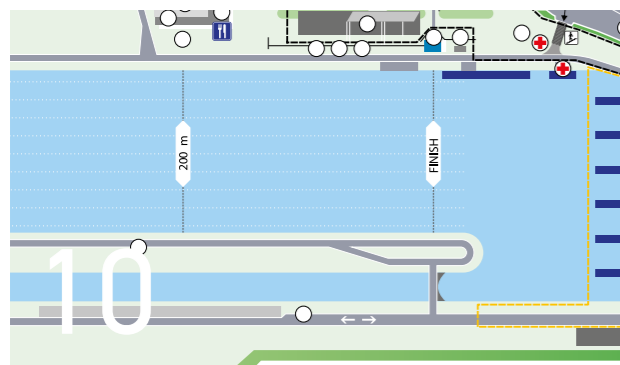


6 - 7 SEPTEMBER 2025
2025



Czech Rowing Association





WELCOME

Annamarie Phelps welcome word

Dear Rowing Friends,

CONTENTS

- 04 Organising Committee
- 05 Regatta Venue
- 07 How to get to Račice Regatta Venue
- 08 The weather conditions in Račice in September
- 10 Venue plan
- 12 Team facilities and services
- 13 Medical facilities and services
- 13 Catering
- 14 Transportation for teams
- 16 Accommodation for teams
- 17 Summary of deadlines
- 18 Visiting Račice
- 20 What not to miss in Prague
- 24 Hotel prices
- 26 Hotel info cards

ORGANISING COMMITTEE

President of the OC:
David KYNCL

President of the Czech Rowing Association:
Michal KURFIRST

Executive Director:
Lucie MAKOVIČKOVÁ

Technical Director:
Luboš DOŠEK

Chair of the Jury:
Jan HAVLÍČEK

Media:
Martina SOUČKOVÁ

Ceremonies:
Dana HŮLOVÁ

Volunteers:
Monika PERGLEROVÁ

Regatta Doctor:
Veronika BARTOŇOVÁ, MD

Videostream:
Art Media

ORGANISING COMMITTEE CONTACT DETAILS

OC 2025 European Rowing U23 Championships
Labe aréna Račice
Račice 130
411 08 Štětí

Mail:
makovickova@rowingracice.com
Website:
<https://racice2025.cz>

GENERAL INFORMATION

THE OVERALL EVENT SCHEDULE

- **Official venue opening:** Thursday 4 September
- **Team Managers Meeting:** Friday 5 September
- **Opening Ceremony:** Friday 5 September
- **Racing Starts:** Saturday 6 September
- **Closing Ceremony:** Sunday 7 September



ENTRY INFORMATION

All entries must be made online at
<https://www.worldrowing.swisstiming.com>.

The final registration deadline is August 25, 2025.

REGATTA VENUE

TECHNICAL PARAMETERS OF THE REGATTA COURSE

- Total length of the artificial water channel is 2 350 m
- Total width is 130 m
- 8 Lanes of 12.5 m width marked with albano system
- Interval measurement points every 500 metres
- Asphalt road around the course 5 km long
- 6 Pontoons
- Protected against wind alongside the course from start to finish
- And side waves by construction design and shores trimming
- New start bridge
- The wheelchair-friendly regatta venue
- 420 beds for accommodation directly at the regatta venue



FINISH TOWER

- six floors
- air conditioned
- total area of 600 m²
- timing and sport presentation operation centre
- offices , Jury meeting room

SPECTATOR AREA

- grandstands for up to 3,000 spectators
- parking facility
- self service restaurant
- merchandising and marketplace
- medical services
- dedicated area for wheelchair users at the grandstands
- ceremonies in front of grandstands
- free access to Internet

RAČICE REGATTA VENUE MAP OF THE SURROUNDINGS



VISA POLICY

The Czech Republic is part of the European Union (EU) and belongs to the Schengen Area. Many countries enjoy visa-free entry to the Czech Republic. However, citizens from some non-EU countries are required to have a valid visa when travelling to the Schengen Area. If a visa is required, be sure to apply at least a month before your visit. More information on entrance to the Czech Republic can be found on the website: <http://www.mvcr.cz/mvcren/web-useful-information.aspx>.

If you need a Letter of Invitation, please contact Secretary General of the Czech Rowing Association Mr. Josef Johánek via johanek@veslo.cz.

In that case please provide the following details: full names, passport numbers and dates of issuing and expiry, dates of birth and relevant travel information.

HOW TO GET TO RAČICE REGATTA VENUE



By Car:

- GPS: Latitude: 50.458255, Longitude: 14.342051
- From Prague and Ústí nad Labem (motorway D8).

Distance and orientation times:

- Praha | 60 km | 50 minutes
- Ústí nad Labem | 56 km | 45 minutes



By Train:

- The regional Railway station Hněvice is about 15 minutes by walk from the Račice Regatta Venue. This station is located on the main line Prague–Dresden. Express trains from Prague and Ústí nad Labem stop there.

Distance and orientation times:

- Praha | 57 km | 46 minutes
- Ústí nad Labem | 49 km | 37 minutes



By Air:

- Václav Havel International Airport, Prague (PRG) is 67 km by road from Račice Regatta Venue. The travel time is approximately 1 hour.





concept 2

AVERAGE TEMPERATURE & SUNRISE/SUNSET TIMES AT THE BEGINNING OF SEPTEMBER

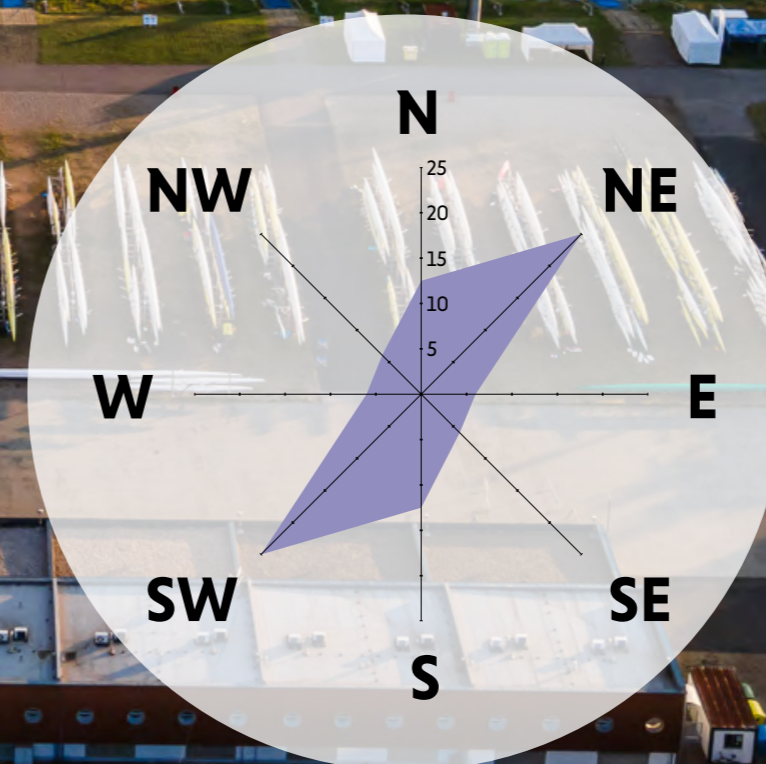
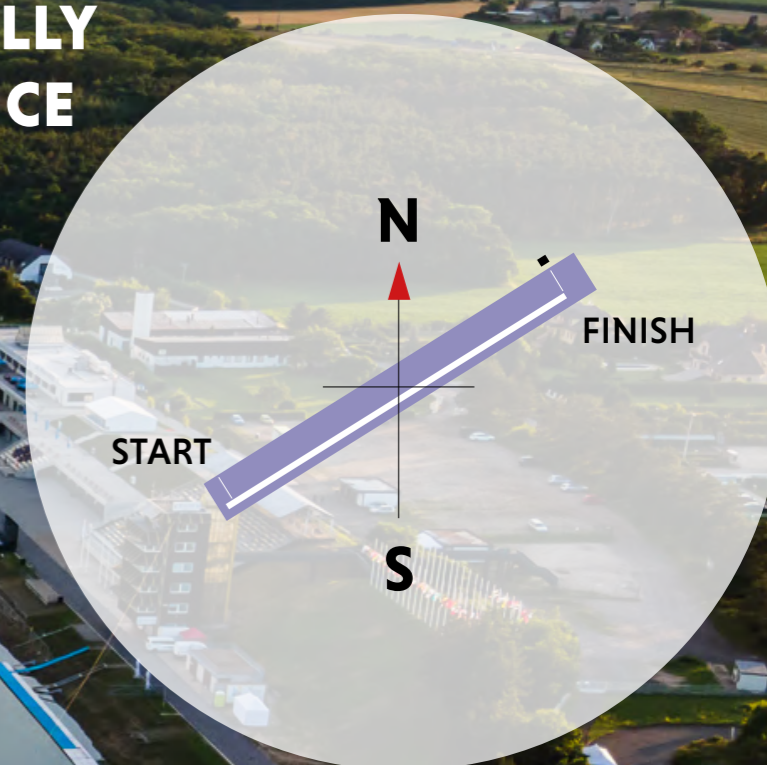
Average temperature of the month in 2012-2021

July	18.9 °C
August	18.3 °C
September	15.8 °C

Sunrise/Sunset times

Sunrise	06.23
Sunset	19.36

GRAPHIC VIEW OF HOW WIND DIRECTION IS TYPICALLY DISTRIBUTED IN RAČICE AT THE BEGINNING OF SEPTEMBER



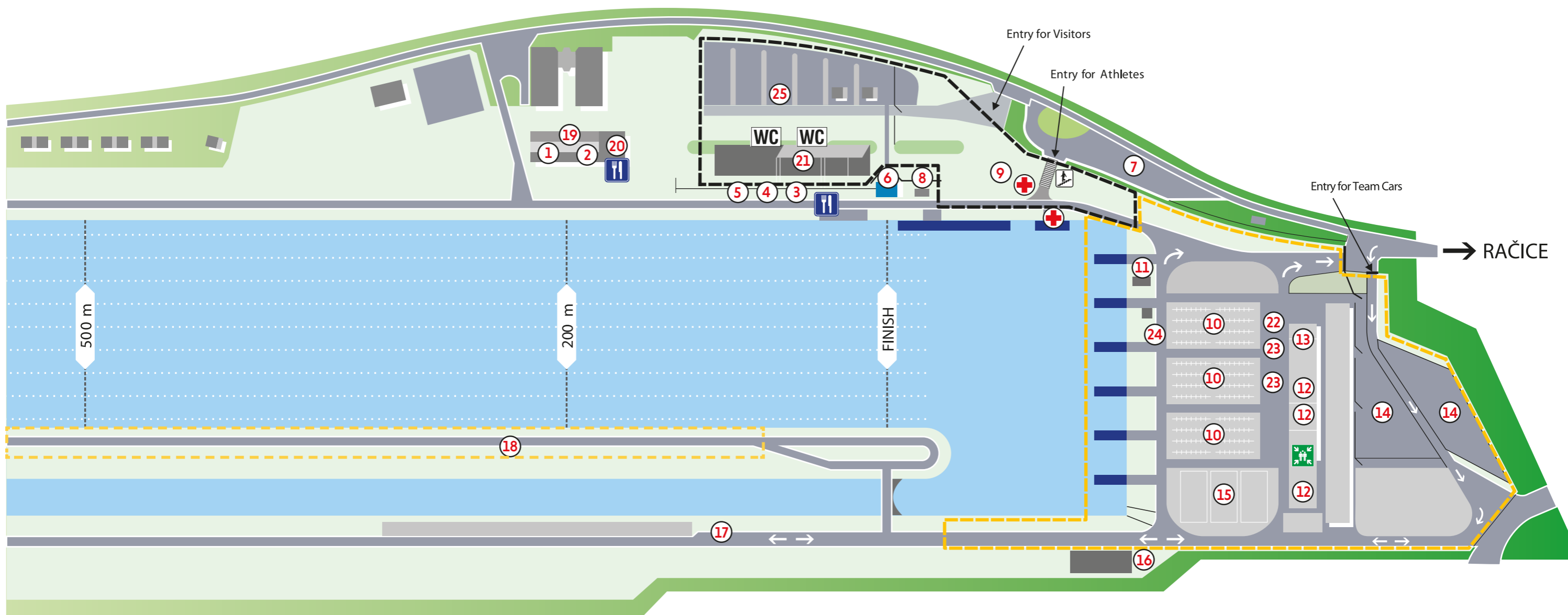
WIND DIRECTION

N	12,5
NE	25
E	6,25
SE	6,25
S	12,5
SW	25
W	6,25
NW	6,25

WIND VELOCITY

0 - 1	14,3
1 - 4	85,7
4 - 9	0
> 9	0

RAČICE REGATTA VENUE PLAN



■ Visitors ■ Accredited zone

1 Accreditation	6 Finish Tower, EC	11 Control Commission	16 Bike Rental	21 Uncovered Grandstands
2 Catering	7 Shuttle Bus Stop	12 Changing Rooms, Rest Area	17 Parking for Trailers	22 Boat Washing
3 Media Centre	8 Mixed Zone	13 Boat & Coxswain weighing	18 Bike Road for Coaches	23 Tap Drinking Water
4 Medical Centre	9 Water Rescue	14 Parking for Teams	19 Administration Building	24 Bow Numbers
5 Doping Control	10 Boat Storage	15 Area for Team Tents	20 Labe Aréna Restaurant	25 Parking for Visitors

TEAM FACILITIES AND SERVICES



BOAT STORAGE

There are boat racks available in the boat storage area. All racks are marked with event (e.g. BW2-, BM8+). Places in the racks will be assigned in advance by the Organising Committee and indicated by stickers with the country code (eg. CZE, ITA). It is not permitted to use the space allocated to other countries.

SANITARY FACILITIES

Sanitary facilities for athletes are available next to the changing rooms. All tap water in the Czech republic is drinkable.

WARM UP AND COOLING DOWN FACILITIES

Limited facilities will be available in boat house. This



location will be marked by a sign "Warm-up area"

COACHES' VIEWING

There is cycling path for coaches on the island along the whole course.

BIKE RENTAL

Bikes for team members can be hired through the OC.



PONTOONS

There are separate launch and arrival pontoons, and these are clearly marked. Pontoon no. 1 is the emergency pontoon and may only be used in emergencies.

BOAT REPAIR

Boat repair facilities and boat builders are located in front of the boat houses.

BOAT WASHING

Boat washing is possible in front of the boat houses.

CHANGING ROOMS / SHOWERS

Changing rooms and showers are available in the restricted access area for athletes.

MEDICAL FACILITIES AND SERVICES

MEDICAL CENTRE

The Medical Centre is located in the grandstand. A doctor as well as Red cross first aid specialists are available to provide medical services during race days from one hour before the first race until one hour after the last race. Only red cross first aid specialists will be available during the training times.

NEAREST HOSPITAL

The nearest hospital is located 7 km from the course at: PENTA HOSPITALS ROUDNICE NAD LABEM
Alej 17. listopadu 1101
413 01 Roudnice nad Labem

RESCUE AND SAFETY

Dedicated rescue boats, manned by two persons each, will be on the water during the training and racing times.



PARKING ARRANGEMENTS

There will be a designated parking for team cars, buses and boat trailers at the Regatta Venue. Please note, the number of parking places is limited.



CATERING

Catering will be on a full board basis:

- Breakfast and dinner will be served at the official hotels
- Lunch will be served at the Regatta Venue.
- The menu will be provided based on meal vouchers.
- The menu will be approved by the Organising Committee and a nutritionist.

Please let us know about your food allergies and food intolerances before August 5, 2025.

Contact person:

Lucie Makovičková, makovickova@rowingracice.com.

MEDIA

The Media Centre will be located in the grandstand.

GRANDSTANDS

There is a Grandstand in the public viewing area.



AIRPORT TRANSFER

The Organising Committee offers shuttle buses from/to Václav Havel Airport. These airport shuttles are **NOT INCLUDED** in the price of accommodation and must be booked through the Organising Committee separately.

Local shuttles are included in the price of accommodation.

TRANSPORTATION FOR TEAMS



AIRPORT TRANSPORTATION

Transportation from and to the Václav Havel Airport Prague (or Prague Railway Station) is **NOT INCLUDED** in the price of accommodation and must be booked through the Organising Committee separately.

The travel time from Václav Havel Airport Prague and the Regatta Venue is approx. 1 hour.

The Arrival and Departure booking forms will be available at www.racice2025.cz and

must be sent to the Organising Committee by email no later than August 5, 2025.

Contact person:
LUCIE MAKVIČKOVÁ
makovickova@rowingracice.com

TRANSPORT FROM / TO AIRPORT

PRICE FOR EACH TRANSPORT FROM/TO VÁCLAV HAVEL AIRPORT TO/FROM HOTEL

MINIVAN 7 PAX

300,00 €

BUS 42 PAX

550,00 €

TRANSPORTATION BETWEEN THE ACCOMMODATION AND THE REGATTA VENUE

Transportation between the official hotels and the Regatta Venue and back **IS INCLUDED** in the price of accommodation and will be arranged on the basis of the shuttle buses.

Contact person:
Lucie Makovičková,
makovickova@rowingracice.com

THERE WILL BE TIME TABLE OF SHUTTLE BUSES IN TEAM MANAGERS MANUAL



RESERVATION SYSTEM

You are kindly requested to book your accommodation using the OC Online Reservation System. The link will be sent to all Secretary Generals.

ACCOMMODATION FOR TEAMS



ONLINE RESERVATION SYSTEM

Reservation of the official hotels can be made through the Organising Committee only. You are kindly requested to book your accommodation using the OC Online Reservation System. This needs to be done no later than June 5, 2025. Changes regarding the accommodation will be accepted only if made by the OC Online Reservation System.

All National Federations will receive the registration code to the OC Online Reservation System by email on 31 January 2025. In case of any problems, please contact

Lucie Makovičková via makovickova@rowingracice.com

The availability of the lodging places in the various categories is limited, therefore the confirmation of the reservation is sent on the first comes - first served basis.

LIST OF OFFICIAL HOTELS, PRICE LIST:

Details of each hotel - see pages 24 - 59 of this bulletin.

PRICE INCLUDES:

- accommodation
- full board (three meals per day): breakfast and dinner will be served at the hotel, lunch at the Regatta Venue
- shuttle bus service between the official hotel and Regatta Venue.

PAYMENT CONDITIONS:

A deposit of 50% of total amount:
14 days after confirmation of accommodation by National Federation, no later than June 22, 2025.

The remaining balance:
July 21, 2025 at the latest.

CANCELLATION POLICY:

Notification before June 26, 2025:
NO CANCELLATION FEE

Notification from June 26 to July 21, 2025:
50% REFUND of the total invoiced amount

Notification from July 22 to July 31, 2025:
25% REFUND of the total invoiced amount

Notification after July 31, 2025:
NO REFUND

The Organising Committee reserves itself the right to charge the responsible person from each National Federations that books a place at the 2025 European Rowing U23 Championships which is not used. The Organising Committee does not take any responsibility for any extra services of the hotels like mini bar, telephone, parking, laundry, wellness etc. These costs are directly charged by the hotel.

PAYMENT DETAILS:

BENEFICIARY:

Národní olympijské centrum vodních sportů, z.s.
Zátopkova 100/2, 1 69 00 Praha 6 - Břevnov
Czech Republic

METHOD OF PAYMENT:

Bank transfer in EURO only (preferred method)

Bank Name Česká spořitelna, a.s.
Bank Address Štefánikova 17/247, 150 31 Praha 5,
Czech Republic
Bank Account No. 000000-1921667293/0800
BIC Swift Code GIBACZPX
IBAN Number CZ07 0800 0000 0019 2166 7293
E-mail Zchmelova@csas.cz

The currency of the account is EURO so please make sure that your payment is in EUROs. Please do not forget about the transaction fees. It is your responsibility to pay these extras when transferring money to our bank account.

PAYMENT AT THE ACCREDITATION CENTRE

Payment is possible also at the Accreditation Centre upon your arrival either in cash - EURO or by credit card.

Cash payment on site is only possible up to EUR 10.000. An amount of over EUR 10.000 must be paid by National Federation (Team Manager, Secretary General, etc.) directly to the bank account of the Beneficiary at the local bank (Česká spořitelna, a.s., town of Roudnice nad Labem).



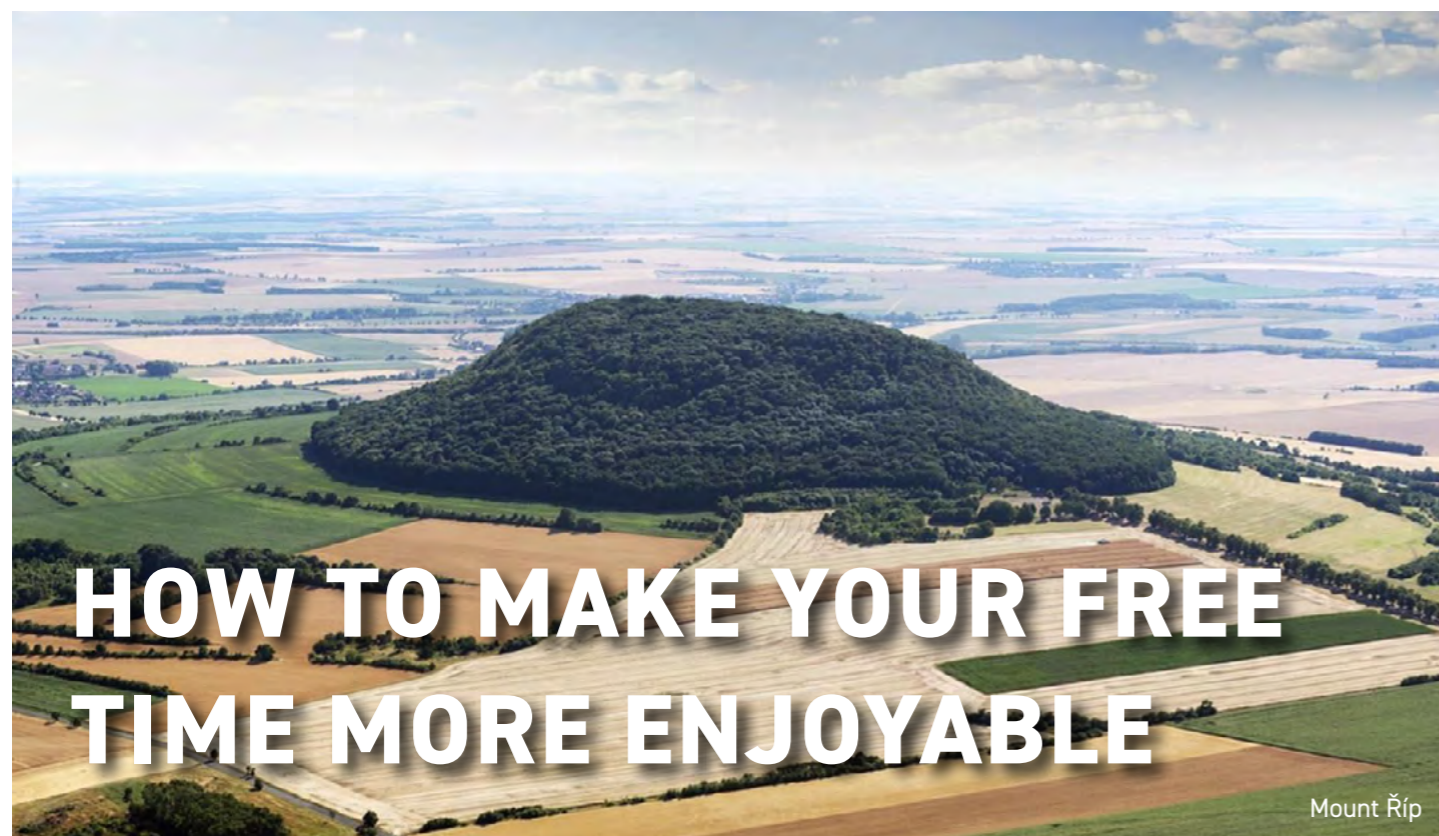
CONTACT PERSON:

Lucie Makovičková, Accommodation
makovickova@rowingracice.com

SUMMARY OF DEADLINES

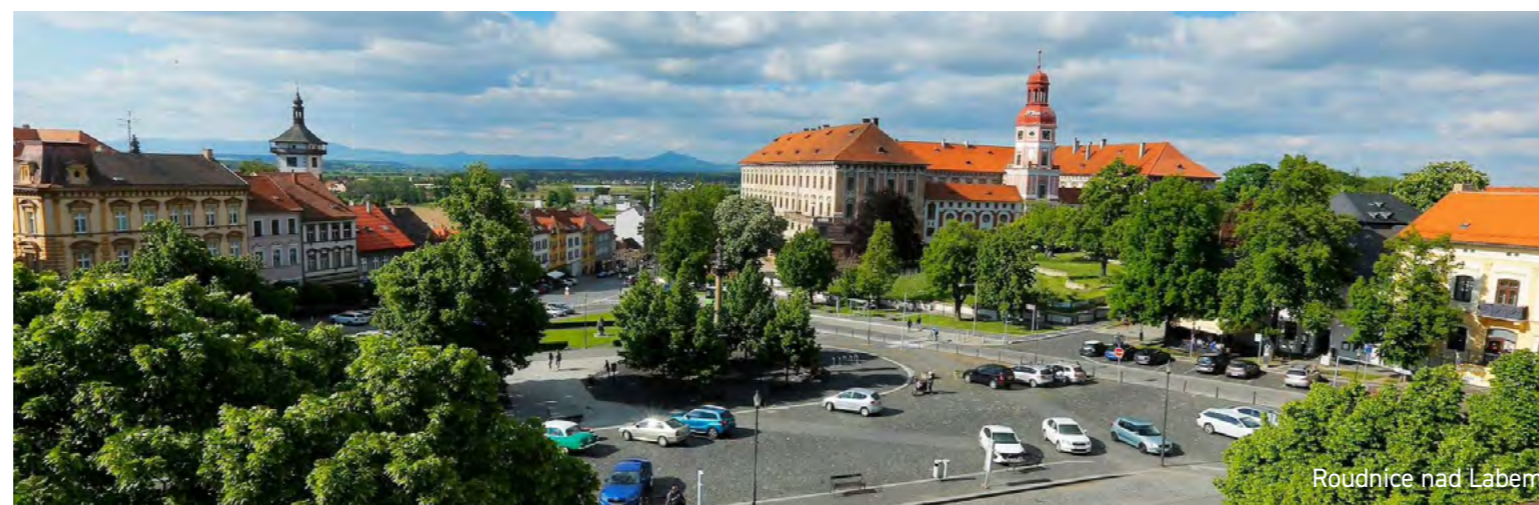
PLEASE OBSERVE THE FOLLOWING DEADLINES UPON SUBMITTING FORMS AND ENTRIES.

Accommodation reservation (Organising Committee Online System)	5 June, 2025
Deposit 50% of accommodation payment deadline - 14 days after confirmation	no later than 22 June, 2025
Remaining amount payment deadline	21 July, 2025
Food allergies and intolerances announcement (by email)	5 August, 2025
Arrival and Departure booking forms (by email)	5 August, 2025
Entry deadline (https://www.worldrowing.swisstiming.com)	25 August 2025



Mount Říp

If you stay at the rowing canal in Račice, you have a great opportunity to enjoy not only sporting experiences, but also beautiful nature and historical places in the surroundings. Račice is an ideal starting point for cycling, walking and cultural activities. Below you will find some recommendations on how to make your free time more enjoyable.



Roudnice nad Labem

Račice and its surroundings offer excellent conditions for cycling. Popular routes take you to picturesque places worth visiting:

ROUDNICE NAD LABEM

(approx. 12 km). Don't forget to stop by the town square and enjoy the local café or pastry shop.

MOUNT ŘÍP

(approx. 15 km). There are several hiking trails leading to the top, which even less experienced cyclists can manage. At the top, you can enjoy a magnificent view of the surrounding countryside and the **Romanesque rotunda of St. George**.

LITOMĚŘICE

(approx. 30 km). It is famous for its market and wine. In summer you can take a trip to the nearby Bohemian Central Highlands.



Litoměřice

The **HIKING TRAILS** go to the mountains of the Central Bohemian Ore Mountains in the valley of the Masuria Mountains.

For those who prefer a quiet walk, the surroundings of Račice are also full of possibilities. We recommend trips to the **ELBE RIVER**, where you can enjoy the natural scenery and tranquillity. The area around the Elbe is famous for its vineyards.

If you would like to combine relaxation with culture, visit some of the events in the area:

GALLERY OF MODERN ART IN ROUDNICE NAD LABEM

This gallery offers a rich collection of Czech modern art.



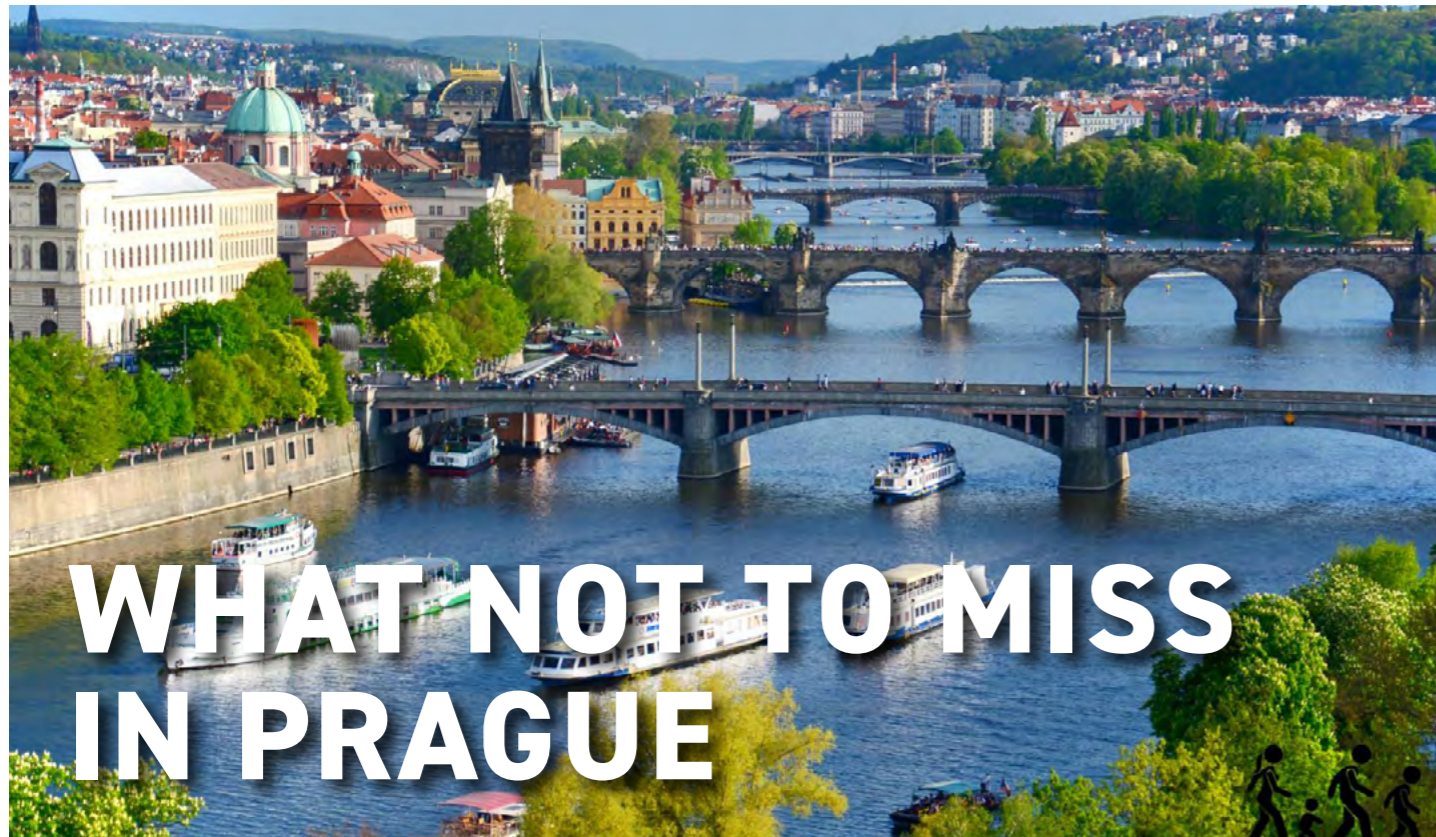
Chateau Libochovice

A BEAUTIFUL RENAISSANCE CHATEAU LIBOCHOVICE

with a large park and an exhibition on the history of the Dietrichstein family.



Romanesque rotunda of St. George



WHAT NOT TO MISS IN PRAGUE

The capital of the Czech Republic is the most valuable urban conservation area in Europe. In 1992 the historical core of the city covering 866 hectares was listed in the UNESCO World Cultural and Natural Heritage Register.

Prague represents a unique collection of historical monuments dominated by Prague Castle which towers high above the city. It merges all artistic and architectonic styles and movements. The historical core of the city is situated on both banks of the Vltava river and consists of six parts - formerly independent urban units unified in the 18th century. They are as follows: Stare Mesto (Old Town), Josefov (the preserved part of the former Jewish Town - today part of the Old Town), Nove Mesto (New Town), Mala Strana (Lesser Town), Hradcany and Vysehrad. Naturally, most of the historical monuments, museums and galleries are concentrated there.

Here is the list of most attractive monuments of Prague:

PRAGUE CASTLE

A castle was built on this site in the 9th century, and a Romanesque palace was erected there in the 12th century. In the 14th century, during the rule of Charles IV, it was

rebuilt in the Gothic style. The

Royal palace was re-built to the current shape under the Jagellos at the end of the 15th century, and at that time, the builder Benedikt Rejt added the now-famous Vladislav Hall, also in the Gothic style. The castle was enlarged in the 16th century, especially after a big fire in 1541. The Spanish Hall, in a new part of the castle, was added during the reign of Rudolf II, and it took its final form during the reign of Empress Maria Theresa, under the direction of the architect M. Pacassi. After World War I, the interior and gardens of the castle were renovated by architect J. Plecnik. Today, the Castle is the seat of the President of the Czech Republic, and it serves as the historical and political centre of both the city

and state.

ST. VITUS, ST. WENCESLAS AND ST. ADALBERT CATHEDRALS

The Gothic St. Vitus cathedral is the spiritual symbol of the Czech state. It was founded in the late 9th century by John of Luxembourg and his sons Charles and John Henry. It took nearly six centuries to build. The current cathedral is situated on the site of a 10th-century rotunda. Designed by architects Mathias Arras and Petr Parler, its construction started in 1344. The final stage of construction was completed only in the period between 1873 and 1929. There are underground tombs in the cathedral of Czech kings. Parler also built the St. Wenceslas Chapel which is decorated with frescoes and

semi-precious stones. The Czech crown jewels are deposited there, too.

OLD ROYAL PALACE

The Old Royal Palace served as the residence of Bohemian princes and kings until the 16th century. It was built upon the relics of a Romanesque palace of Prince Sobeslav. Additional reconstructions in the Gothic and Renaissance styles were initiated by famous Czech kings Premysl Otakar II, Charles IV, Wenceslas IV and Vladislav Jagello. Its most noteworthy part is the Gothic Vladislav Hall - the largest profane hall of medieval Prague (1487 - 1500, Benedikt Rejt) with a remarkable rounded rib vault, today the venue of presidential elections and ceremonial events.

GOLDEN LANE

Small houses built in the gothic fortification, the homes of 16th century castle riflemen and craftsmen. Between 1916 - 1917, Franz Kafka lived in No. 22.

PETRIN LOOKOUT TOWER AND LABYRINTH

A reduced copy of the Eiffel Tower (60 m high) built in 1891 on the occasion of the 1891 Jubilee Exhibition. 299



steps lead up to the top platform. A maze of mirrors set up originally for the Jubilee Exhibition (1891) and featuring a diorama of "Battle of the Praguers with the Swedes in 1648 at the Charles Bridge".

CHARLES BRIDGE

Started in 1357 by Master Otto and completed by Petr Parler, this is the oldest bridge in Prague. Its statues and sculptural groups date mostly from the 18th century. The most well-known are the works of Matthias Braun and Ferdinand Maxmilian Brokoff. The bridge is 515 metres long and 10 metres wide.





OLD TOWN SQUARE

Dating from the 12th century, the square has witnessed many a significant event. Beside the Old Town Hall and the Church of Our Lady before Týn, the square has several other dominants - the baroque St. Nicholas church, the rococo Kinsky palace housing the National Gallery graphic collection, the Stone Bell house - a gothic palace from the 14th century, now the Municipal Gallery concert and exhibition rooms, as well as the Master Jan Hus Memorial sculptured by Ladislav Saloun. The square witnessed the execution of 27 Czech noblemen on 21 June, 1621 - in memory of that event, 27 crosses are marked in the pavement. The Prague meridian can be seen not far from there.

WENCESLAS SQUARE

Prague's centre of commerce. The upper part of the square is dominated by a statue of the main patron saint of the Czech lands, St. Wenceslas and four other Czech patron saints (St. Prokop, St. Adalbert, St. Ludmila and St. Agnes) by Josef Vaclav Myslbek. Erected in 1912.

NATIONAL THEATRE

A neo-Renaissance building of 1868-81, built to plans of J. Zitek. A fire destroyed much of the building in its first year of existence. It was rebuilt by architect Josef Schulz in 1883 and underwent a thorough renovation a hundred years later. The authors of both exterior and interior decorations are artists of the so-called National Theatre generation: M. Ales, F. Zenisek, V.

Hynais, J. V. Myslbek, and others. The National Theatre is a major Czech stage and its repertoire includes drama, opera and ballet.

VYSEHRAD

The ancient seat of the Premyslide princes built on a rock over the river Vltava. The oldest building there is the rotunda of St. Martin. The main landmark of Vysehrad is the St. Peter and Paul cathedral. In its vicinity, there is a

residence for canons, casemates, a park, and a cemetery called Slavín with tombs of famous personalities of Czech culture. The Southern part of the fortifications offers a beautiful view of Prague. Vysehrad is open to public round the clock. Getting Around

All important information about Prague such as food&drink, places, events, etc. can be found at www.prague.en.



HOTEL INFORMATION

PRICES INCLUDE ACCOMMODATION, FULL BOARD AND SHUTTLE TRANSPORT BETWEEN THE HOTEL THE REGATTA VENUE.

Category	Hotel name	Town	Distance to the Venue (km)	Driving distance to the Venue (min.)	Number of single rooms	Single room or twin single used rate	Number of twin rooms	Double rate per person	Number of multibed rooms	Multibed rate per person
EXCLUSIVE equivalent to 4*	DUO	Prague	52	40	50	€ 212	50	€ 180		
STANDARD equivalent to 3*	ROWING	Račice Venue	0	0	0	€ 180	20	€ 155		
	SKIF	Račice Venue	0	0	2	€ 180	22	€ 155		
	REGATTA	Račice Venue	0	0	0	€ 180	19	€ 155		
	SPORT	Štětí	4	10	6	€ 180	24	€ 155		
	OÁZA	Štětí	4	10	0	€ 180	11	€ 155		
	MAGNOLIA	Roudnice n. Labem	10	15	4	€ 180	23	€ 155		
	SPORT LÍPA	Roudnice n. Labem	10	15	0	€ 180	16	€ 155		
	ROOSEVELT	Litoměřice	20	25	2	€ 180	15	€ 155		
	LUDMILA	Mělník	22	30	0	€ 180	30	€ 155		
	OLYMPIONIK	Mělník	18	25	6	€ 180	12	€ 155		
	SPORT	Kralupy n. Vltavou	30	35	5	€ 180	50	€ 155		
ACTIVE STADIUM	Lovosice	20	25	14	€ 180	23	€ 155			
ECONOMY equivalent to 2*	U LIŠKY	Hoštka	25	35	1	€ 165	24	€ 135		
	LINDŮV DVŮR	Hoštka	25	35	0	€ 165	18	€ 135		
	LUDMILA	Mělník	22	30	0	€ 165	24	€ 135		
	LABE	Litoměřice	20	25	0	€ 165	30	€ 135		
LOW COSTS	REGATTA 4-bed room	Račice Venue	0	0	0		0		19	€ 125
	REGATTA 6-bed room	Račice Venue	0	0	0		0		20	€ 110

HOTEL DUO, PRAGUE

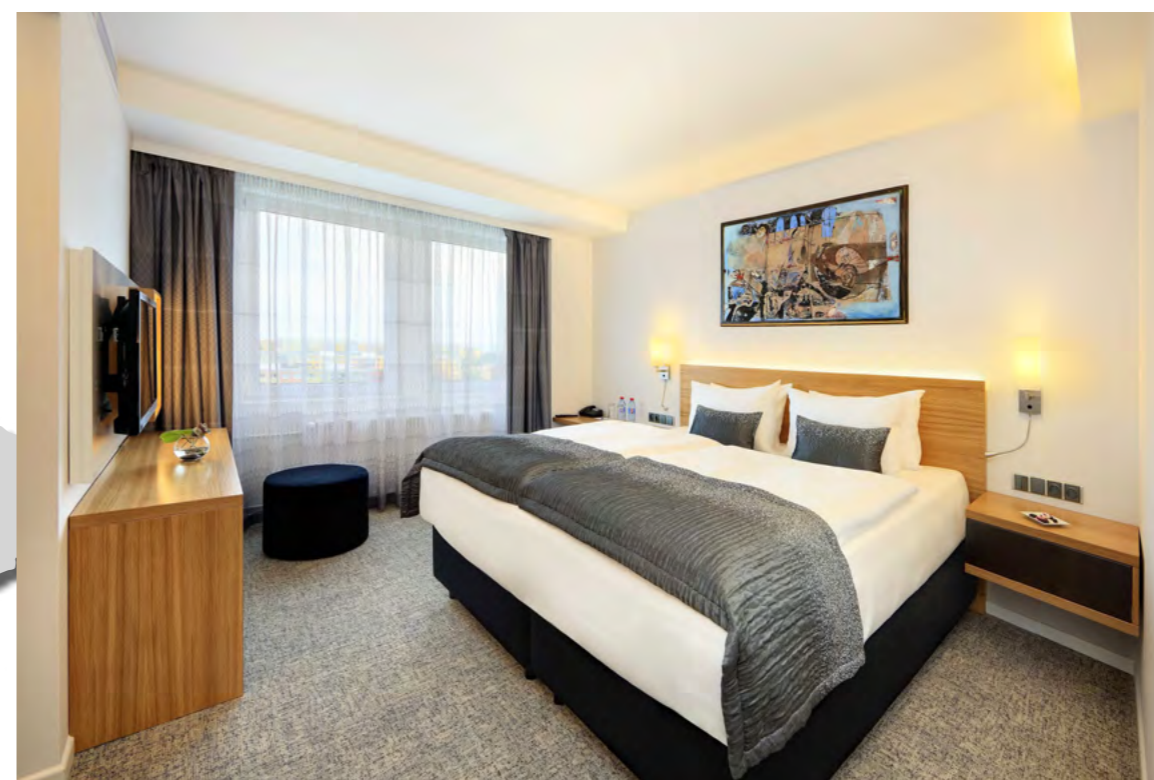
HOTEL CATEGORY: EXCLUSIVE (EQUIVALENT TO 4*)

Hotel Address:	Teplická 492, 190 00 Praha 9
Website:	www.hotelduo.cz
Regatta Venue:	52 km from the hotel, 40 min. from the hotel
Hotel Location:	hotel is located at the beginning of the city, 12 minutes by metro (red line C, Střžkov metro station) to the city center
On-site Parking:	bus and car outdoor parking lot - charged servis, 400 CZK/car/day
Accommodation Capacity:	150x superior twin rooms (2 separate single beds)
Room Amenities:	private bathroom – bathtub, toilet, hairdryer, towels satellite TV, fridge, safe deposit box, coffee and tea making facilities, air conditioning, non-smoking room
Internet WI-FI Connection:	free of charge
Daily Cleaning:	free of charge
Laundry Service:	charged service
Dining:	at the hotel restaurant
Hotel Facilities:	hotel restaurant Formanka, the Terrace Café, in-hotel shop, luggage storage sportcentre with bowling, sauna, fitness-room, sports and Thai massage, hairdressing salon - all charged services
English Speaking Staff:	yes

PRICES PER PERSON/NIGHT

SINGLE ROOM FULL BOARD: EUR 212

TWIN ROOM FULL BOARD: EUR 180



HOTEL DUO
PRAGUE

HOTEL ROWING

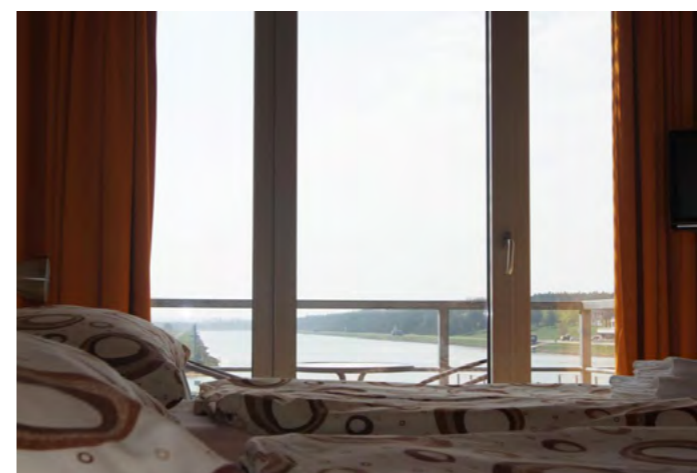
HOTEL CATEGORY: STANDARD (EQUIVALENT TO 3*)

Hotel Address:	Labe aréna Račice, Račice 130, 411 08 Štětí
Website:	www.racice.info
Račice Regatta Course:	0 km
Hotel Location:	hotel is located directly at the Regatta Course, behind the boat storage area and the Boat House
On-site Parking:	free of charge
Room Amenities:	2 separate single beds private bathroom (toilet, shower) satellite TV, fridge table, chairs air conditioning non-smoking room
Internet Wi-Fi Connection:	free of charge
Laundry Service:	charged service
Dining:	at the regatta catering room
Hotel Facilities:	Hotel Restaurant, Fitness, Beach volleyball court, Sauna
English Speaking Staff:	yes

PRICES PER PERSON/NIGHT

SINGLE ROOM FULL BOARD: EUR 180

TWIN ROOM FULL BOARD: EUR 155



HOTEL
ROWING

HOTEL SKIF

HOTEL CATEGORY: STANDARD (EQUIVALENT TO 3*)

Hotel Address:	Labe aréna Račice, Račice 130, 411 08 Štětí
Website:	www.racice.info
Račice Regatta Course:	0 km
Hotel Location:	hotel is located directly at the Regatta Course, behind the boat storage area and the Boat House
On-site Parking:	free of charge
Room Amenities:	2 separate single beds private bathroom (toilet, shower) satellite TV, fridge table, chairs air conditioning non-smoking room
Internet Wi-Fi Connection:	free of charge
Laundry Service:	charged service
Dining:	at the regatta catering room
Hotel Facilities:	Hotel Restaurant, Fitness, Beach volleyball court, Sauna
English Speaking Staff:	yes

PRICES PER PERSON/NIGHT

SINGLE ROOM FULL BOARD: EUR 180

TWIN ROOM FULL BOARD: EUR 155



HOTEL SKIF

HOTEL REGATTA 1

HOTEL CATEGORY: STANDARD (EQUIVALENT TO 3*)

Hotel Address:	Labe aréna Račice, Račice 130, 411 08 Štětí
Website:	www.racice.info
Račice Regatta Course:	0 km
Hotel Location:	hotel is located directly at the Regatta Course, behind the boat storage area and the Boat House
On-site Parking:	free of charge
Room Amenities:	2 separate single beds private bathroom (toilet, shower) satellite TV, fridge table, chairs air conditioning non-smoking room
Internet Wi-Fi Connection:	free of charge
Laundry Service:	charged service
Dining:	at the regatta catering room
Hotel Facilities:	Hotel Restaurant, Fitness, Beach volleyball court, Sauna
English Speaking Staff:	yes

PRICES PER PERSON/NIGHT

SINGLE ROOM FULL BOARD: EUR 180

TWIN ROOM FULL BOARD: EUR 155



HOTEL SPORT

HOTEL CATEGORY: STANDARD (EQUIVALENT TO 3*)

Hotel Address:	Družstevní 400, 411 08 Štětí
Website:	www.hotelsport-steti.cz
Račice Regatta Venue	4 km from the hotel approximately 10 minutes
On-site Parking:	free of charge
Room Amenities:	private bathroom - shower, toilet satellite TV, fridge, balcony NO air conditioning, non-smoking room
Internet Wi-Fi Connection:	free of charge
Daily Cleaning:	free of charge
Laundry Service:	charged service
Reception:	24 hours a day
Dining:	at the Hotel Restaurant
Hotel Facilities:	Hotel Restaurant, Cafe, Outdoor terrace
English Speaking Staff:	yes

PRICES PER PERSON/NIGHT

SINGLE ROOM FULL BOARD: EUR 180

TWIN ROOM FULL BOARD: EUR 155



HOTEL SPORT

PENSION OÁZA

HOTEL CATEGORY: STANDARD (EQUIVALENT TO 3*)

Hotel Address:	ČS armády 146, 411 08 Štětí
Website:	www.penzion-oaza.cz
Račice Regatta Venue:	3 km from the hotel approximately 10 minutes
On-site Parking:	free of charge
Room Amenities :	private bathroom – shower, toilet satellite TV, non-smoking room, no air conditioning bed with the headboard on both sides of the bed
Internet Wi-Fi Connection:	free of charge
Daily Cleaning:	free of charge
Laundry Service:	is not provided
Dining:	at the Hotel Restaurant
Hotel Facilities:	Restaurant Oáza billiard and card table at the reception, charged service
English Speaking Staff:	yes

PRICES PER PERSON/NIGHT

SINGLE ROOM FULL BOARD: EUR 180

TWIN ROOM FULL BOARD: EUR 155



HOTEL MAGNOLIA

HOTEL CATEGORY: STANDARD (EQUIVALENT TO 3*)

Hotel Address:	Karlovo náměstí 20 41301 Roudnice nad Labem
Website:	https://hotelmagnolia.cz/en
Regatta Venue:	10 km from the hotel 15 min. from the hotel
On-site Parking:	free of charge (max. 5 cars)
Room Amenities:	private bathroom - bathtub or shower, toilet satellite TV, telephone bed with the headboard at the top of the bed NO air conditioning, non-smoking room
Internet Wi-Fi Connection:	free of charge
Daily Cleaning:	free of charge, every third day
Laundry Service:	charged service
Dining:	at the Hotel Restaurant
Hotel Facilities:	Café Vavřinec
English Speaking Staff:	yes

PRICES PER PERSON/NIGHT

SINGLE ROOM FULL BOARD: EUR 180

TWIN ROOM FULL BOARD: EUR 155



HOTEL
MAGNOLIA

HOTEL SPORT LÍPA

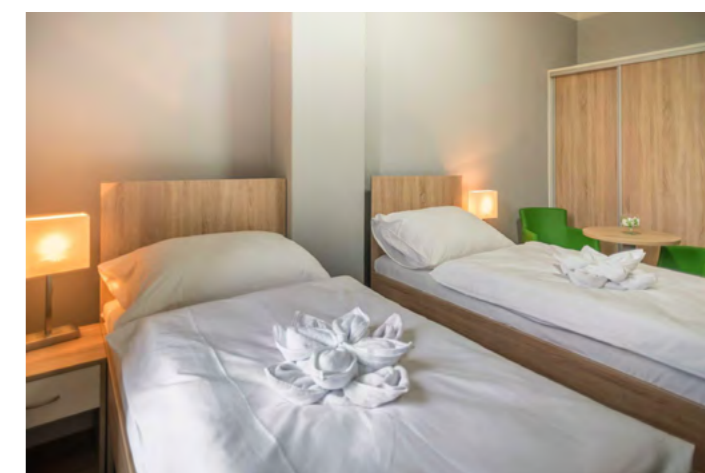
HOTEL CATEGORY: STANDARD (EQUIVALENT TO 3*)

Hotel Address:	Pod Lipou 297, Vědomice, 413 01 Roudnice nad Labem
Website:	www.hotelsportlipa.cz
Regatta Course Račice:	12 km from the hotel approximately 15 minutes
On-site Parking:	free of charge
Room Amenities:	private bathroom - shower, toilet satellite TV, minibar, safe deposit box no air conditioning, non-smoking rooms
Internet Wi-Fi Connection:	free of charge
Daily Cleaning:	free of charge
Laundry Service:	charged service
Dining:	at the Hotel Restaurant
Hotel Facilities:	football fields, beach volleyball and tennis courts, jogging trail, swimming pool, gym, fitness, sauna – all paid services
English Speaking Staff:	yes

PRICES PER PERSON/NIGHT

SINGLE ROOM FULL BOARD: EUR 180

TWIN ROOM FULL BOARD: EUR 155



HOTEL
SPORT LÍPA

HOTEL ROOSEVELT

HOTEL CATEGORY: STANDARD (EQUIVALENT TO 3*)

Hotel Address:	Rooseveltova 962/18, 412 01 Litoměřice
Website:	www.roosevelt-litomerice.cz/en
Regatta Course Račice:	25 km from the hotel approximately 35 minutes
On-site Parking:	free of charge
Room Amenities:	Comfortably furnished double room with separate bed has its own, newly renovated bathroom with shower and toilet. The room also offers satellite TV and internet Wi-Fi. Free parking is available for all guests. The hairdryer is also free of charge at the reception desk.
Internet Wi-Fi Connection:	free of charge
Daily Cleaning:	free of charge
Laundry Service:	charged service
Dining:	at the Hotel Restaurant
English Speaking Staff:	yes

PRICES PER PERSON/NIGHT

SINGLE ROOM FULL BOARD: EUR 180

TWIN ROOM FULL BOARD: EUR 155



HOTEL
ROOSEVELT

HOTEL LUDMILA

HOTEL CATEGORY: STANDARD (EQUIVALENT TO 3*)

HOTEL CATEGORY: ECONOMY (EQUIVALENT TO 2*)

Hotel Address:	Pražská 2639, 276 01 Mělník
Website:	www.ludmila.cz
Račice Regatta Venue:	22 km from the hotel approximately 30 minutes
Hotel Location:	hotel is located at the edge of the pitoresque town of Mělník just few minutes from its historic center
On-site Parking:	free of charge
Room Amenities:	private bathroom with shower or bathtub, toilet, hair dryer satellite TV bed with the headboard at the top of the bed NO air conditioning, non-smoking room
Internet Wi-Fi Connection:	free of charge
Daily Cleaning:	free of charge
Laundry Service:	charged service
Dining:	at the Hotel Restaurant
Hotel Facilities:	Pilsner restaurant and bar bowling, table football, darts, billiards – charged service
English Speaking Staff:	yes

PRICES PER PERSON/NIGHT***

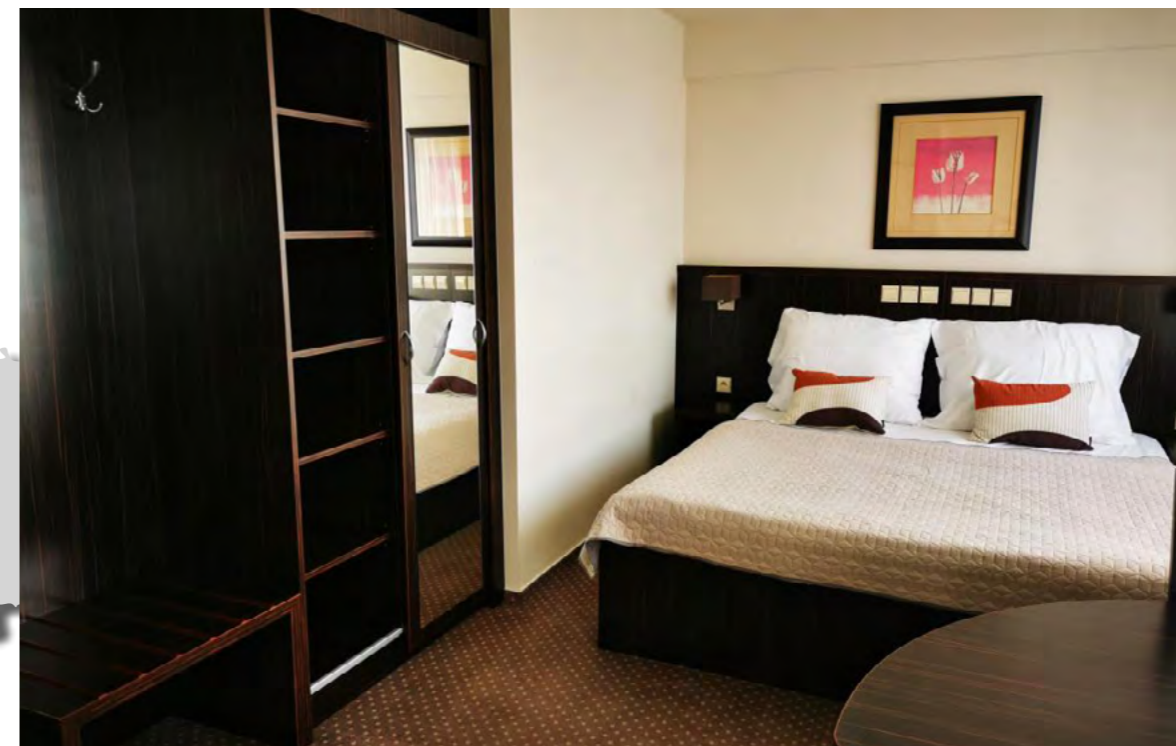
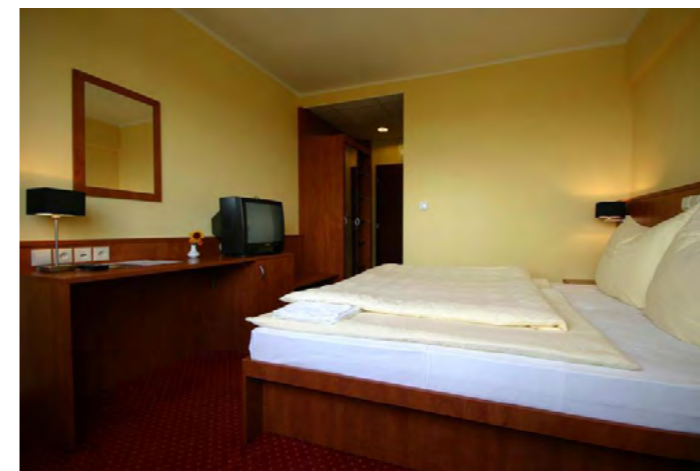
SINGLE ROOM FULL BOARD: EUR 180

TWIN ROOM FULL BOARD: EUR 155

PRICES PER PERSON/NIGHT**

SINGLE ROOM FULL BOARD: EUR 165

TWIN ROOM FULL BOARD: EUR 135



HOTEL
LUDMILA

HOTEL OLYMPIONIK

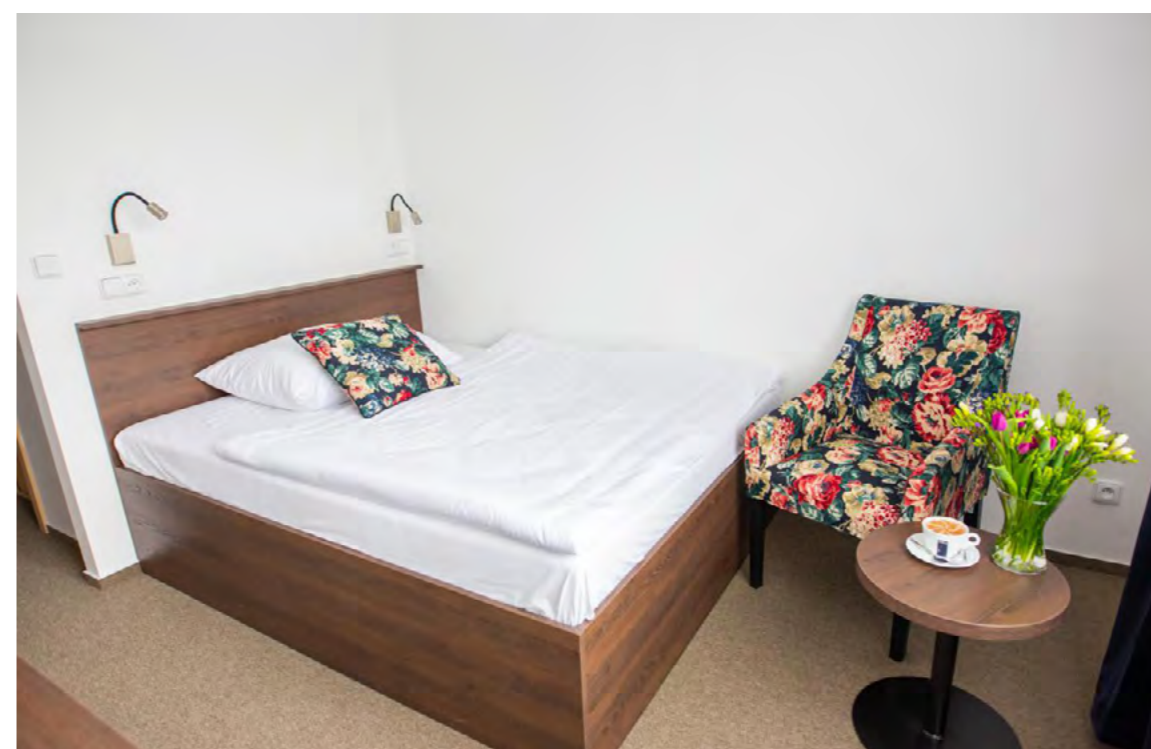
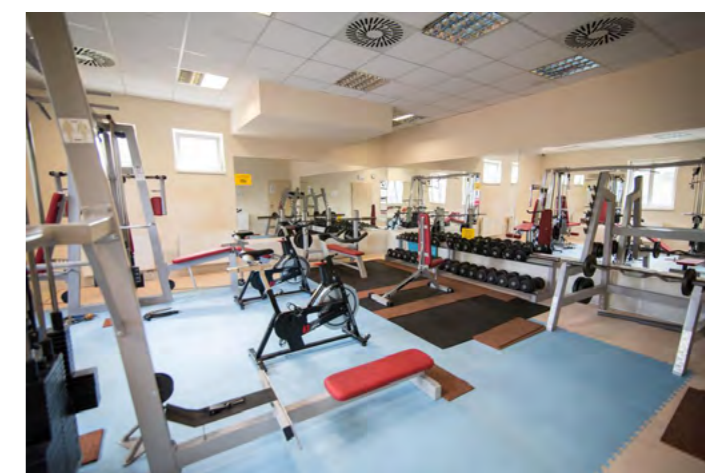
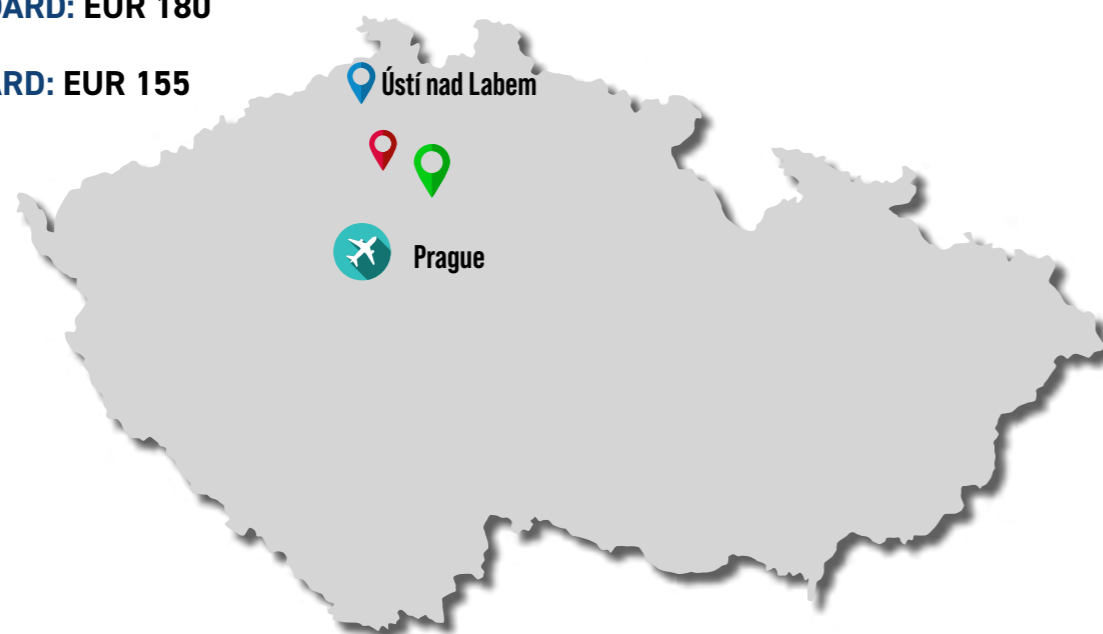
HOTEL CATEGORY: STANDARD (EQUIVALENT TO 3*)

Hotel Address:	Bezručova 3819 276 01 Mělník
Website:	www.hotel-olympionik.cz
Regatta Venue:	18 km from the hotel
Driving distance to the Venue (min)	25 min. from the hotel
On-site Parking:	free of charge
Room Amenities:	private bathroom with shower or bathtub, toilet, hair dryer satellite TV, bed with the headboard at the top of the bed NO air conditioning, non-smoking room
Internet Wi-Fi Connection:	free of charge
Daily Cleaning:	free of charge
Laundry Service:	charged service
Dining:	at the Hotel Restaurant
Hotel Facilities:	Hotel Restaurant, Cafe, Wellness center: sauna, whirlpool, massage, fitness, multifunctional gym, tennis court, grassy sports area – charged service
English Speaking Staff:	yes

PRICES PER PERSON/NIGHT

SINGLE ROOM FULL BOARD: EUR 180

TWIN ROOM FULL BOARD: EUR 155



HOTEL
OLYMPIONIK

HOTEL SPORT (Kralupy)

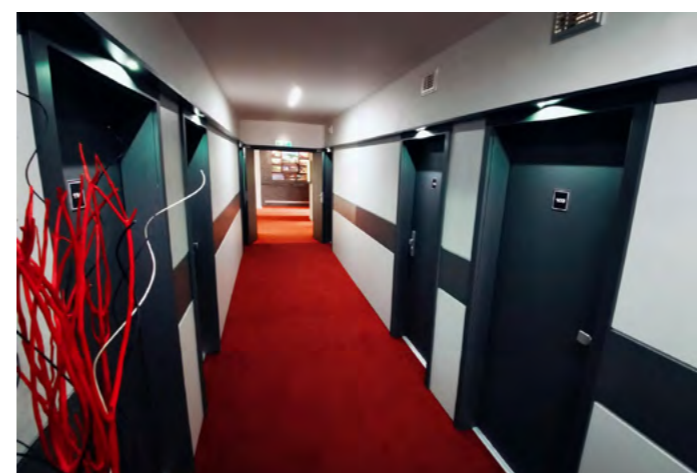
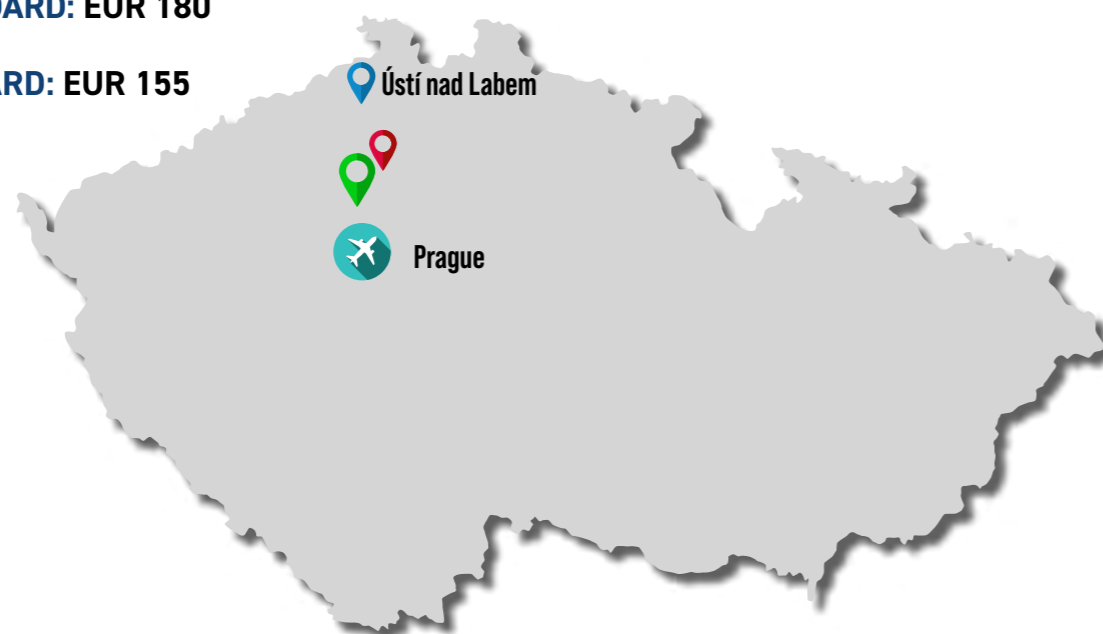
HOTEL CATEGORY: STANDARD (EQUIVALENT TO 3*)

Hotel Address:	U Cukrovaru 1086, 278 01 Kralupy nad Vltavou
Website:	https://hotel-sport.cz
Regatta Venue:	25 km from the hotel
Driving distance to the Venue (min)	30 min. from the hotel
On-site Parking:	free of charge
Room Amenities:	private bathroom with shower or bathtub, toilet, hair dryer satellite TV, NO air conditioning, non-smoking room
Internet Wi-Fi Connection:	free of charge
Daily Cleaning:	free of charge
Laundry Service:	charged service
Dining:	at the Hotel Restaurant
Hotel Facilities:	Hotel Restaurant, Cafe indoor swimming pool, sauna, indoor tennis hall, badminton hall, bowling – charged service
English Speaking Staff:	yes

PRICES PER PERSON/NIGHT

SINGLE ROOM FULL BOARD: EUR 180

TWIN ROOM FULL BOARD: EUR 155



HOTEL
SPORT

HOTEL ACTIVE STADIUM

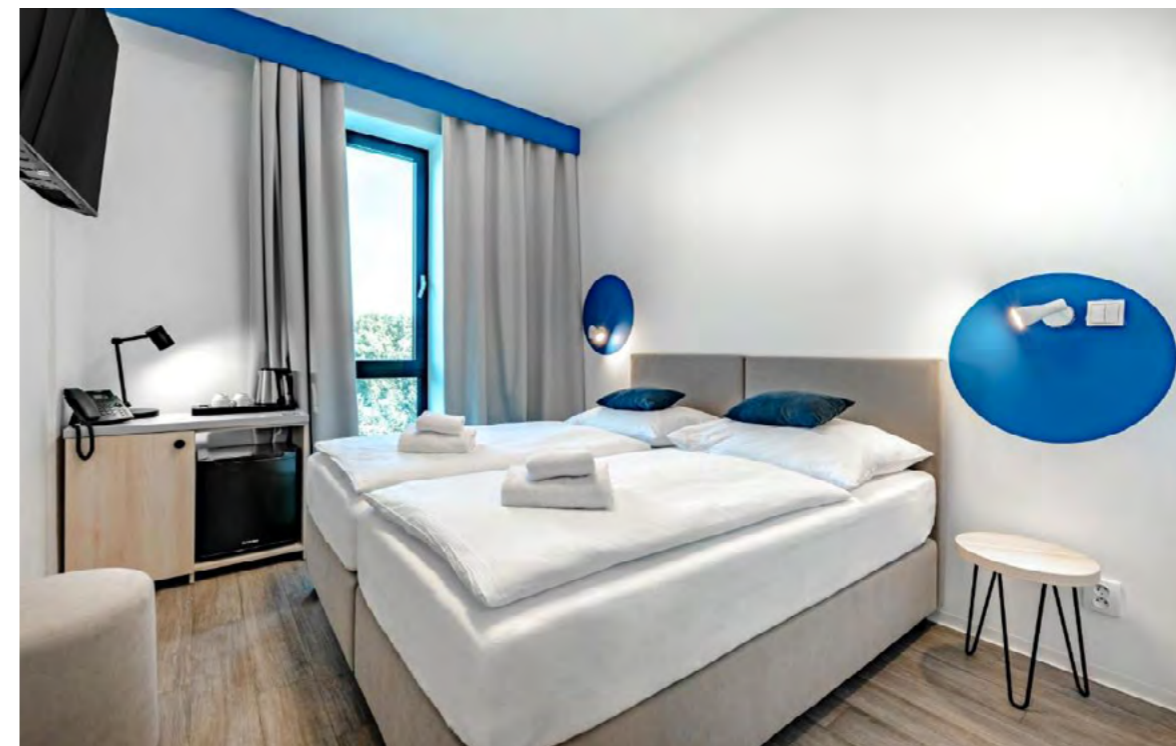
HOTEL CATEGORY: STANDARD (EQUIVALENT TO 3*)

Hotel Address:	U Stadionu 1022/2, 410 02 Lovosice 2
Website:	https://www.activestadium.cz/
Regatta Venue:	30 km from the hotel
Driving distance to the Venue (min)	30 min. from the hotel
On-site Parking:	free of charge
Room Amenities:	Former hostel of Lovosice winter stadium went through extensive reconstruction, completed in 2023. We offer nowadays an accommodation and services of a modern hotel Active Stadium ***.
Internet Wi-Fi Connection:	free of charge
Daily Cleaning:	free of charge
Laundry Service:	charged service
Dining:	at the Hotel Restaurant
Hotel Facilities:	Hotel Restaurant, Cafe You can find a winter arena - stadium, a football field, tennis courts, an indoor swimming pool and several others places for your various physical activities in the multipurpose sports area just few steps from our hotel. – charged service
English Speaking Staff:	yes

PRICES PER PERSON/NIGHT

SINGLE ROOM FULL BOARD: EUR 180

TWIN ROOM FULL BOARD: EUR 155



HOTEL
ACTIVE STADIUM

HOTEL U LIŠKY

HOTEL CATEGORY: ECONOMY (EQUIVALENT TO 2*)

Hotel Address:	Náměstí Svobody 164, 411 72 Hořtka
Website:	www.ulisky.com
Račice Regatta Venue:	8 km from the hotel approximately 10 minutes
On-site Parking:	free of charge
Room Amenities:	private bathroom with toilet and shower/bathtub flat TV with satellite bed with the headboard at the top of the bed NO air conditioning, non-smoking room
Internet Wi-Fi Connection:	free of charge
Daily Cleaning:	free of charge
Laundry Service:	charged service
Dining:	at the Restaurant Formanka
Hotel Facilities:	bowling, table football, darts, billiards charged service Sauna - charged service, small indoor pool
English Speaking Staff:	yes

PRICES PER PERSON/NIGHT

SINGLE ROOM FULL BOARD: EUR 165

TWIN ROOM FULL BOARD: EUR 135



U LIŠKY

LINDŮV DVŮR

HOTEL CATEGORY: ECONOMY (EQUIVALENT TO 2*)

Hotel Address:	Náměstí Svobody 164, 411 72 Hořtka
Website:	www.ulisky.com
Račice Regatta Venue:	8 km from the hotel approximately 10 minutes
On-site Parking:	free of charge
Room Amenities:	private bathroom with toilet and shower/bathtub flat TV with satellite bed with the headboard at the top of the bed NO air conditioning, non-smoking room
Internet Wi-Fi Connection:	free of charge
Daily Cleaning:	free of charge
Laundry Service:	charged service
Dining:	at the Restaurant Formanka, U Lišky hotel, 3 minutes walk
Hotel Facilities:	bowling, table football, darts, billiards charged service Sauna - charged service, small indoor pool
English Speaking Staff:	yes

PRICES PER PERSON/NIGHT

SINGLE ROOM FULL BOARD: EUR 165

TWIN ROOM FULL BOARD: EUR 135



HOTEL LABE

HOTEL CATEGORY: ECONOMY (EQUIVALENT TO 2*)

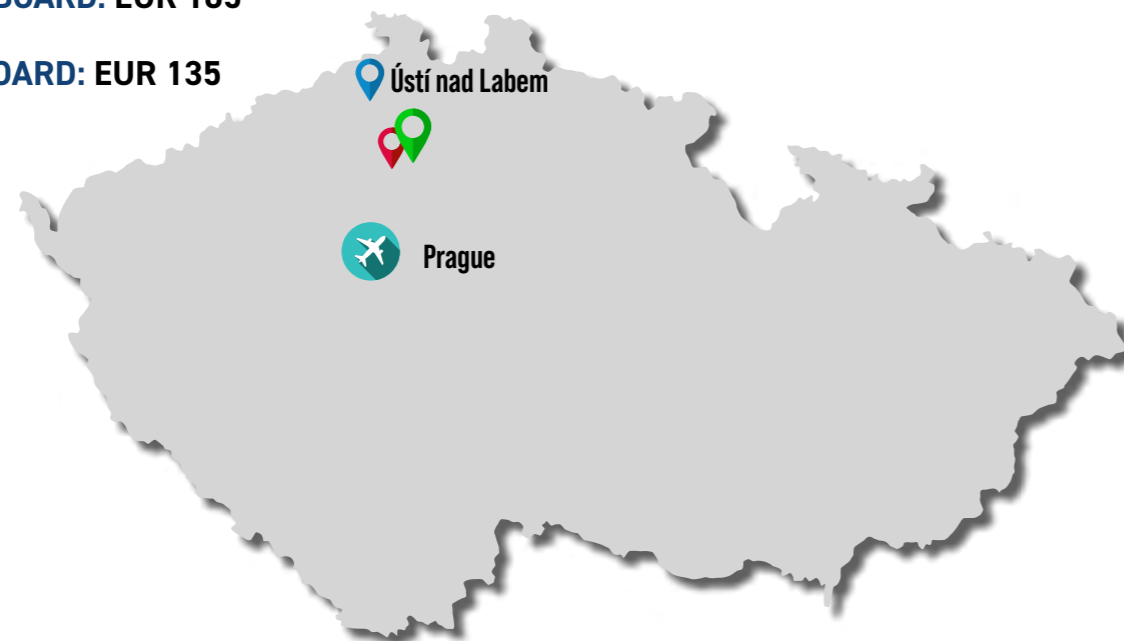
Hotel Address:	Vrchlického 10, 412 01 Litomeřice
Website:	https://www.hotel-labe.cz/en
Račice Regatta Venue:	25 km from the hotel approximately 35 minutes
On-site Parking:	free of charge
Room Amenities:	private bathroom with toilet and shower/bathtub flat TV with satellite, NO air conditioning, non-smoking room
Internet Wi-Fi Connection:	free of charge
Daily Cleaning:	free of charge
Laundry Service:	charged service
Dining:	at the hotel restaurant
English Speaking Staff:	yes



PRICES PER PERSON/NIGHT

SINGLE ROOM FULL BOARD: EUR 165

TWIN ROOM FULL BOARD: EUR 135



HOTEL LABE

HOTEL REGATTA 2

HOTEL CATEGORY: LOW COST

Hotel Address:	Labe aréna Račice, Račice 130, 411 08 Štětí
Website:	www.racice.info
Račice Regatta Course:	0 km
Hotel Location:	hotel is located directly at the Regatta Course, behind the boat storage area and the Boat House
On-site Parking:	free of charge
Room Amenities:	2 bunk beds / 3 bunk beds sink common sanitary facilities no flat TV NO air conditioning non-smoking room
Internet Wi-Fi Connection:	is not provided
Laundry Service:	charged service
Dining:	at the regatta catering room
Hotel Facilities:	Hotel Restaurant, Fitness, Beach volleyball court, Sauna
English Speaking Staff:	yes

PRICES PER PERSON/NIGHT

4-BED ROOM FULL BOARD: EUR 125

6-BED ROOM FULL BOARD: EUR 110



HOTEL
REGATTA 2

2025
**European
rowing**
under 23
championships



Račice
Czechia

